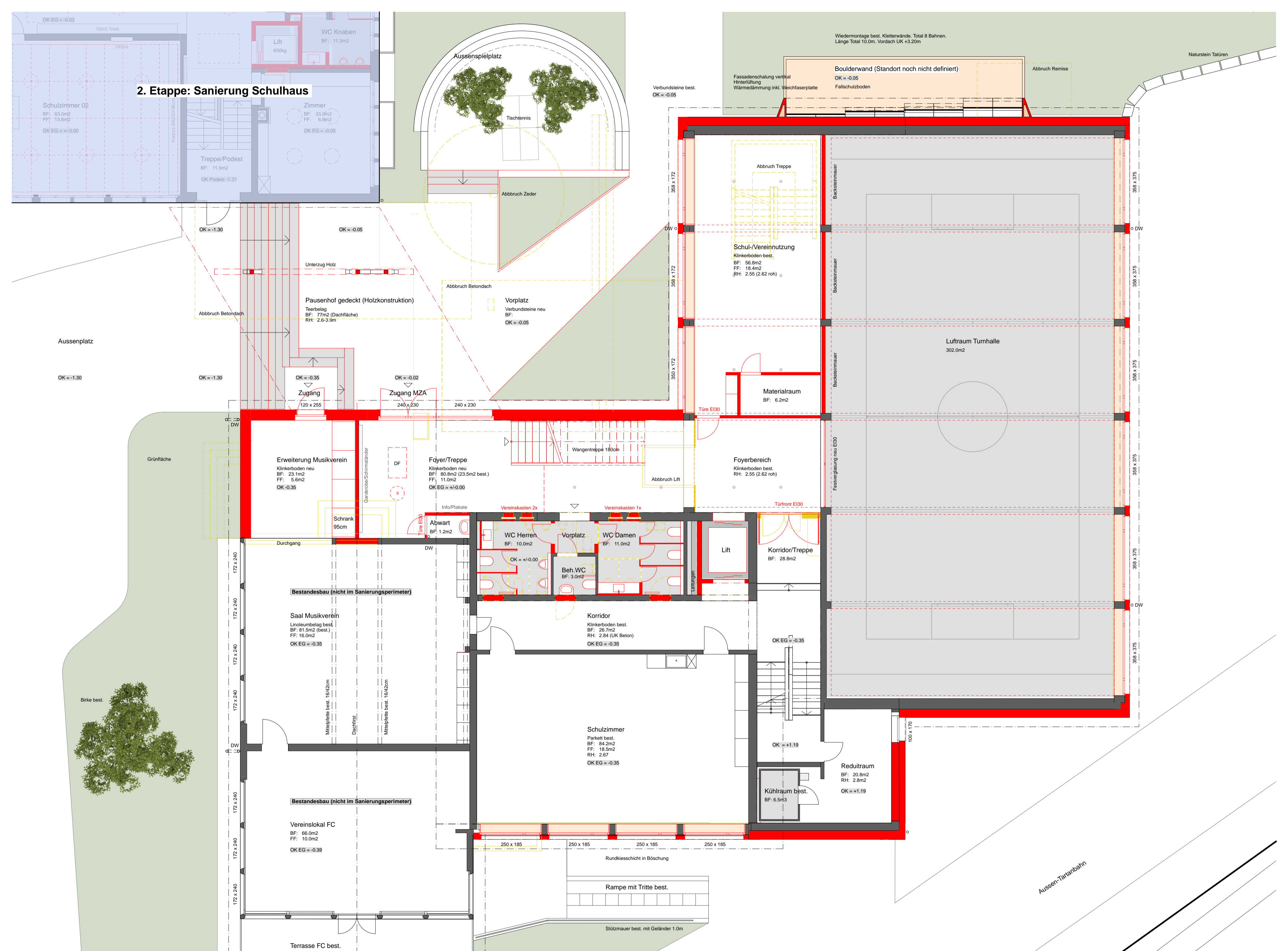


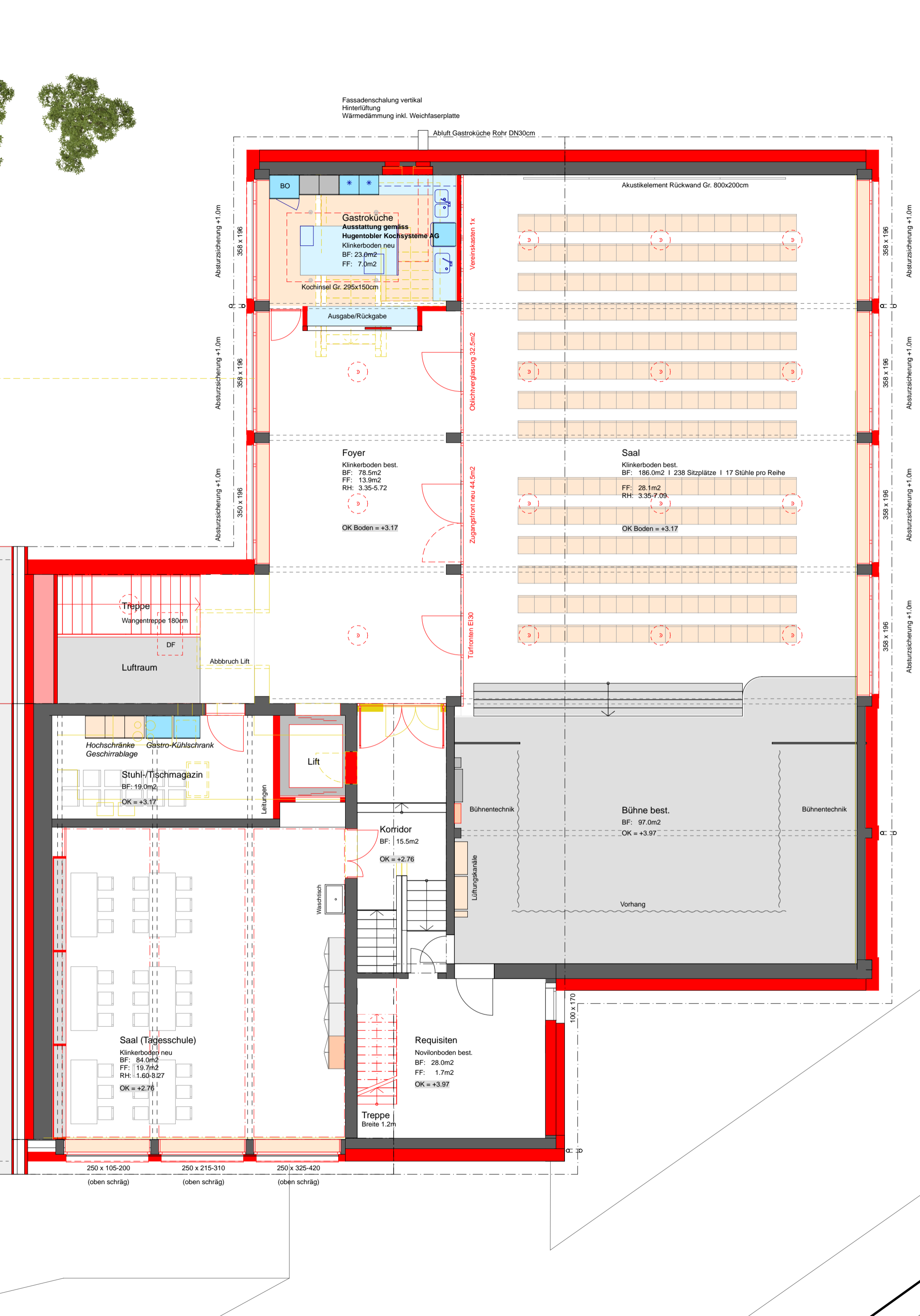
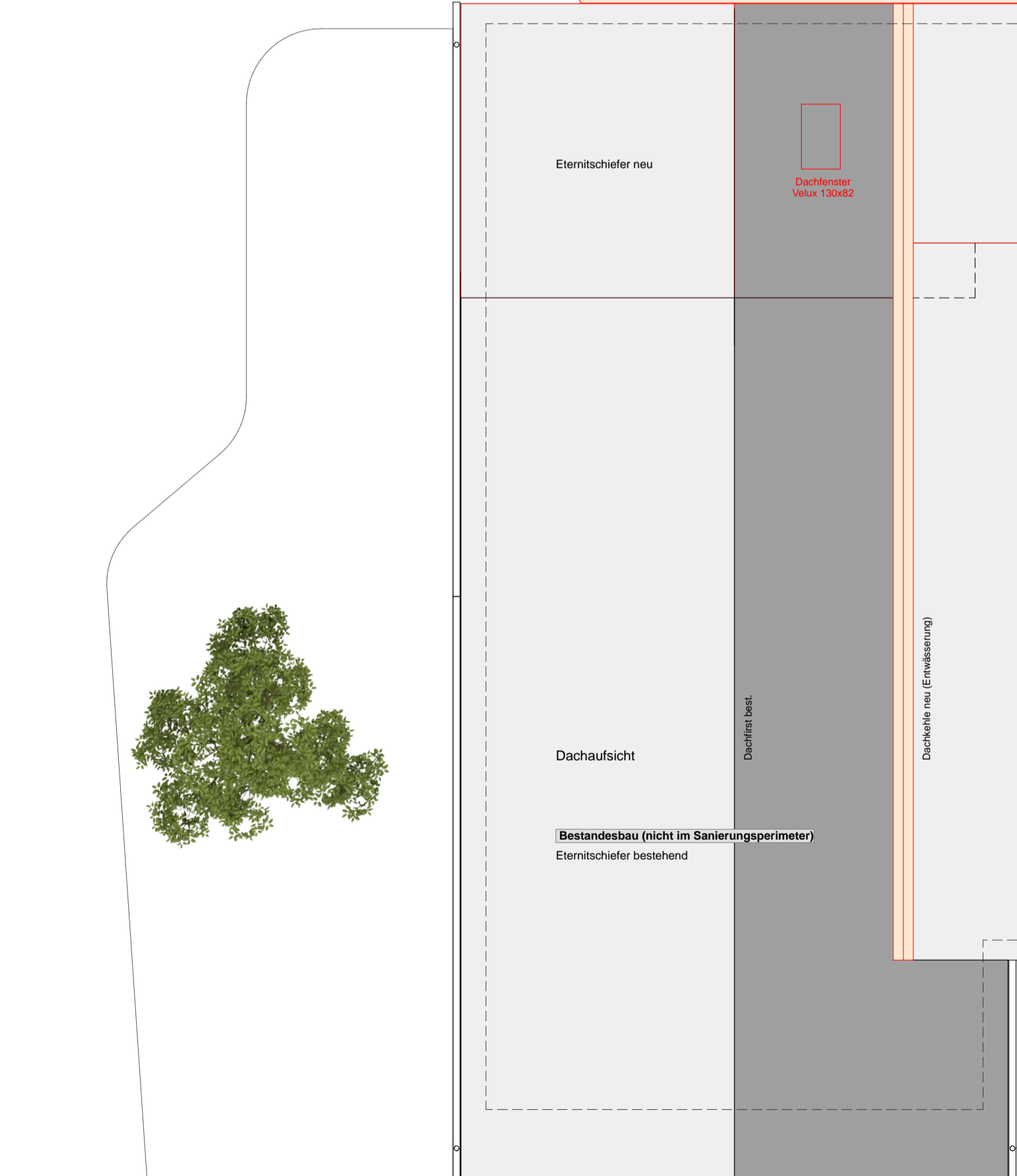
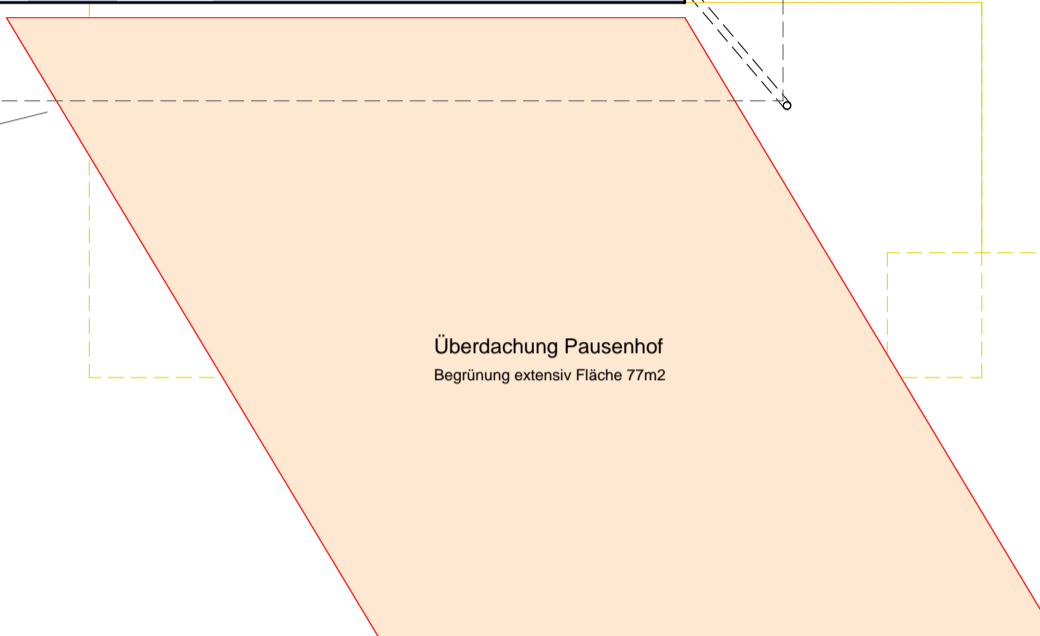
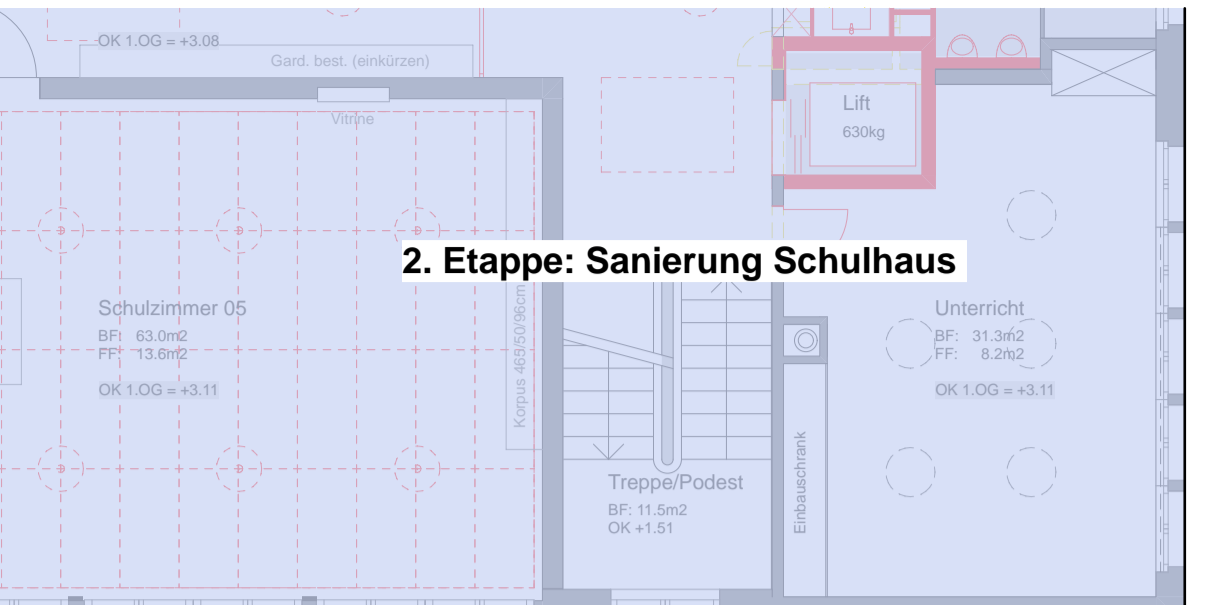
# 2. Etappe: Sanierung Schulhaus

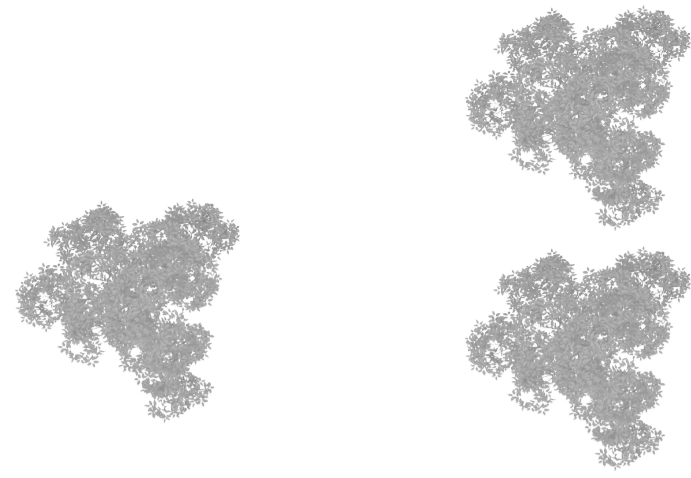
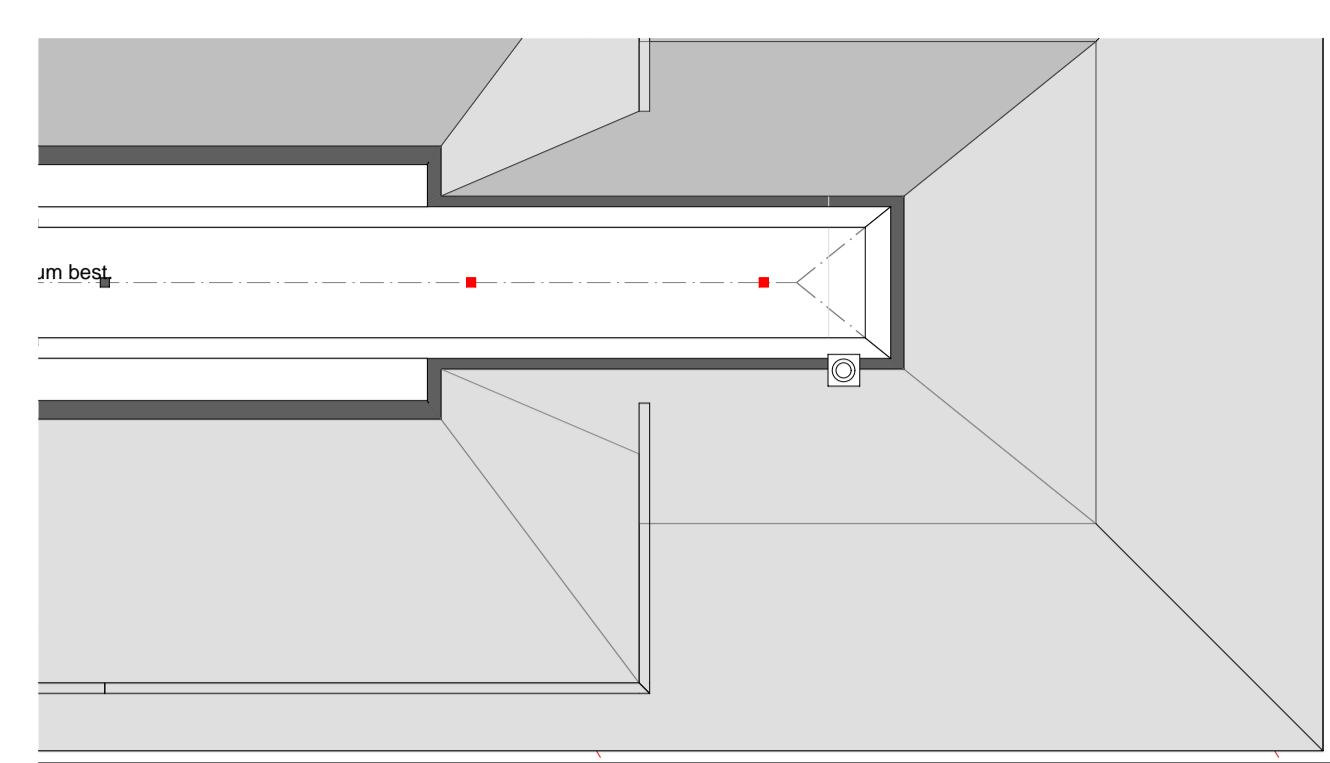


## 2. Etappe: Sanierung Schulhaus



## 2. Etappe: Sanierung Schulhaus





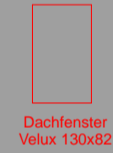
Dachneigung DN 21° Indach-PV-Anlage 3S Solar. Leistung 72.3kWp  
371 Module. Absorberfläche 398m2.

Überdachung Pausenhof

Dachfläche PV-Anlage inkl. Spenglerabschlüsse

Ziegeleindeckung Nord  
Fläche: 283m2

Eterniteindeckung Erweiterung  
Fläche: 55m2

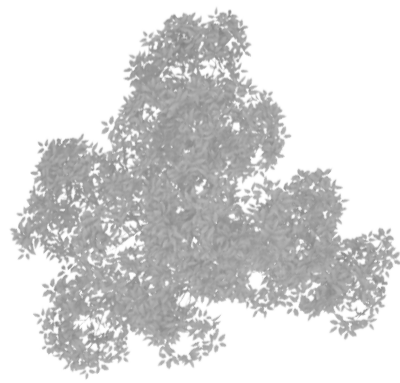


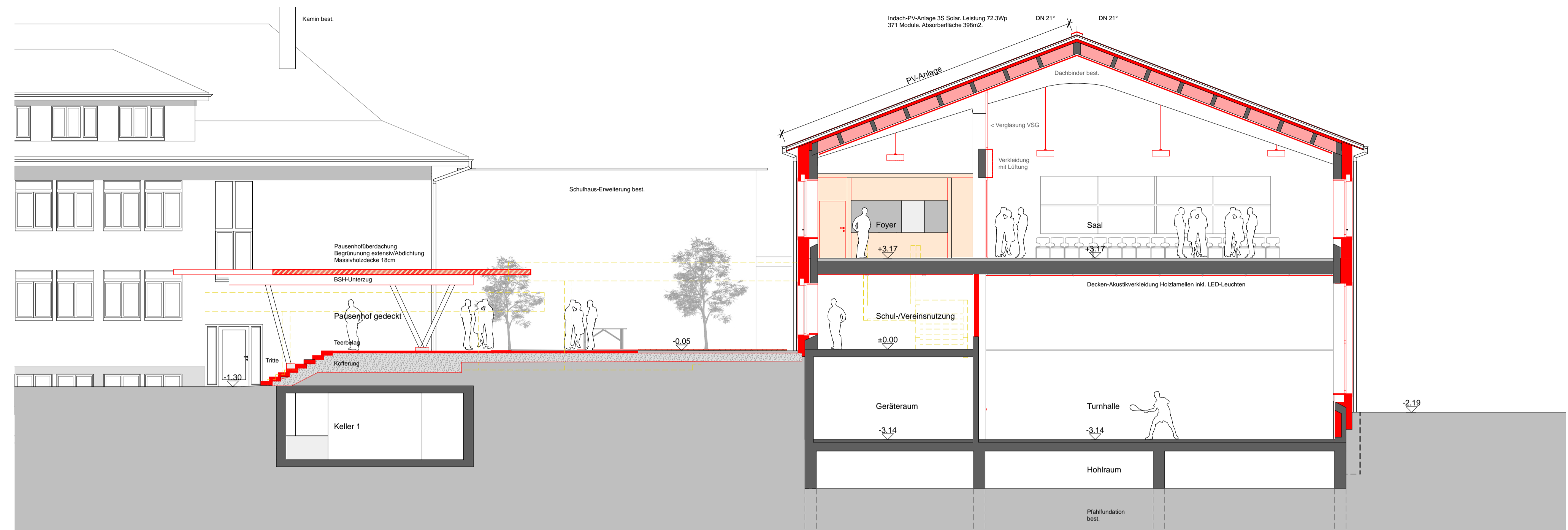
Dachfenster

Eterniteindeckung Vereinslokal  
Fläche: 179m2

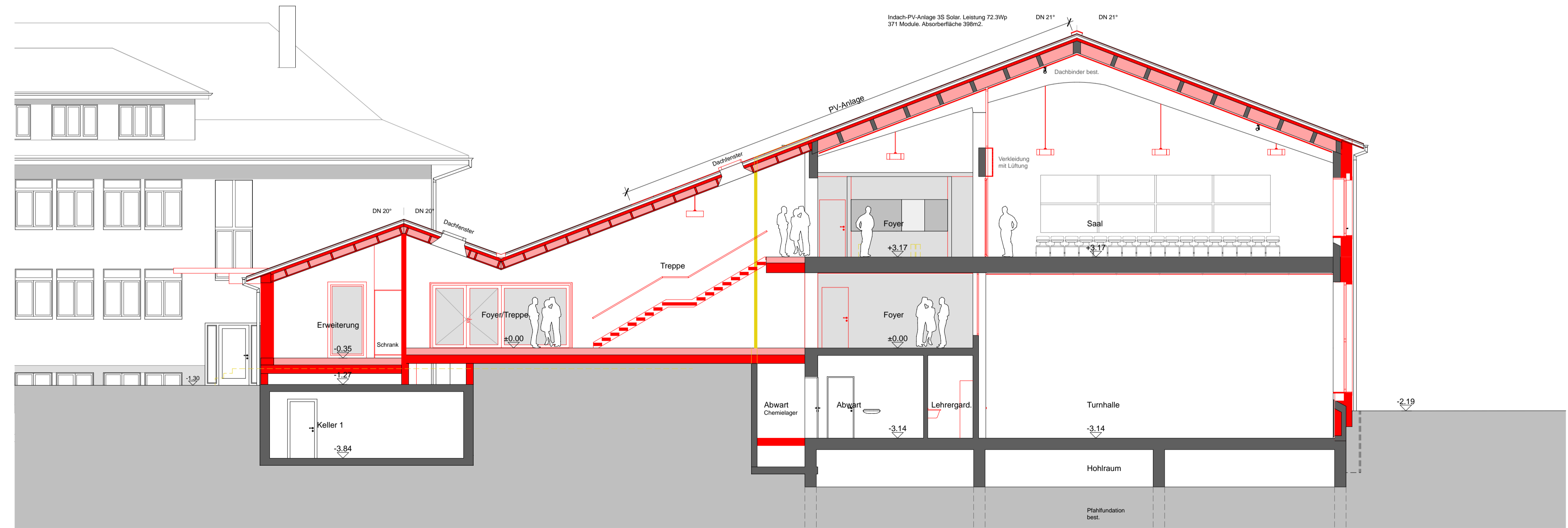
Ziegeleindeckung Süd

Ziegeleindeckung Nord  
Fläche: 35m2





Querschnitt A-A



Querschnitt B-B